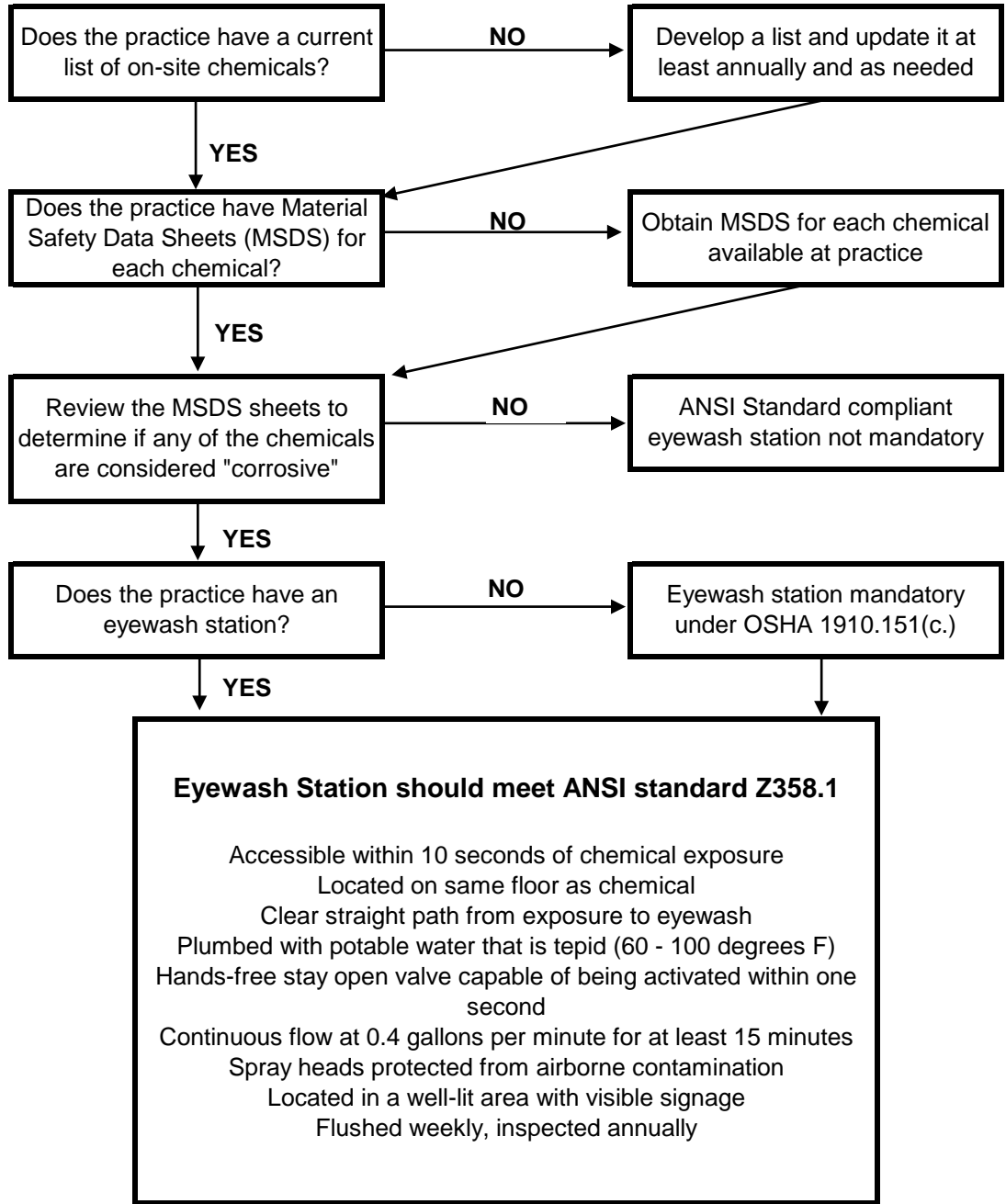


**OSHA Hazard Communication Standard  
Eyewash Algorithm**



**References:**

OSHA Hazard Communication Standard (29 CFR 1910.1200). [www.osha.gov](http://www.osha.gov)  
 Standard Interpretation: 4/14/2008 Request to Provide List of Corrosive Materials and Concentrations Requiring Use of Emergency Eyewashes and Showers. [www.osha.gov](http://www.osha.gov)  
 Standard Interpretation: 4/18/2002 ANSI Z358.1 Guidance for Complying with 1910.151(c) Citation Policy for Eyewashes and Showers. [www.osha.gov](http://www.osha.gov)